

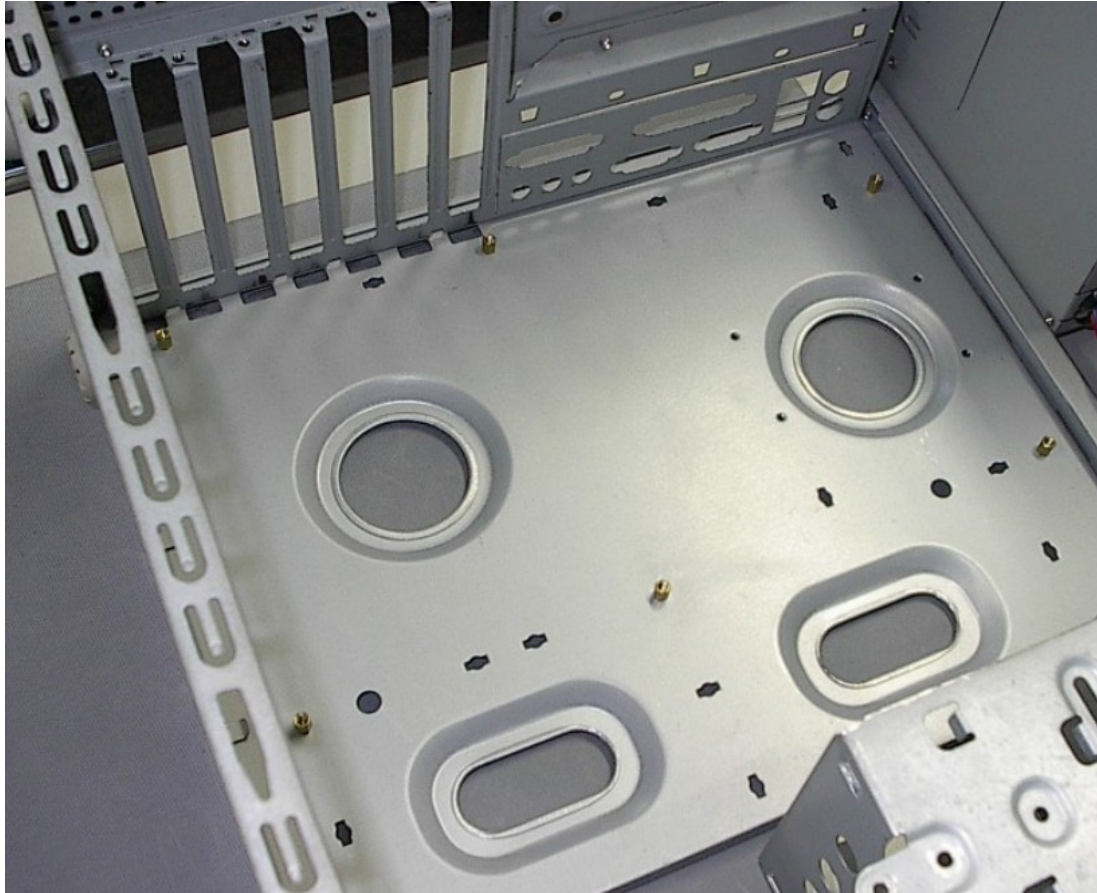


SEG

Sistema de Ensino Gaúcho

Montagem e manutenção de microcomputadores

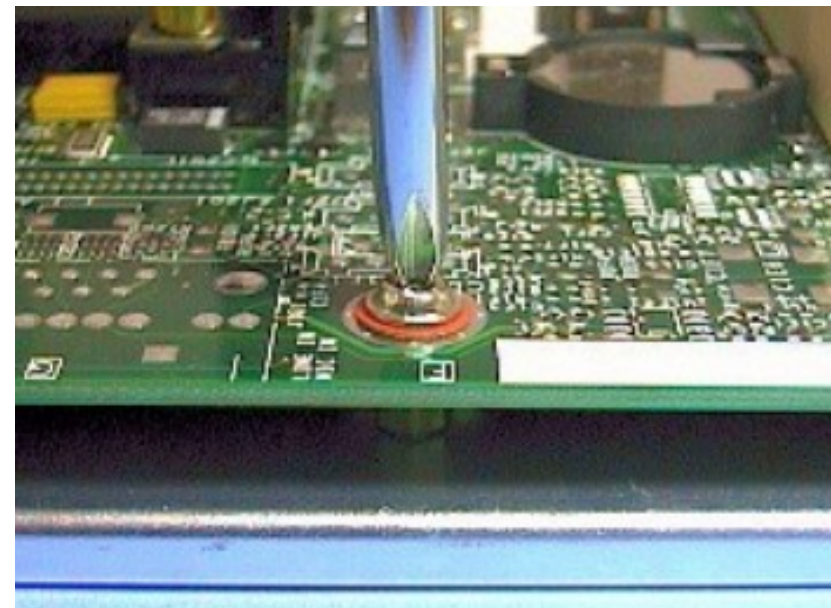
Montagem do computador



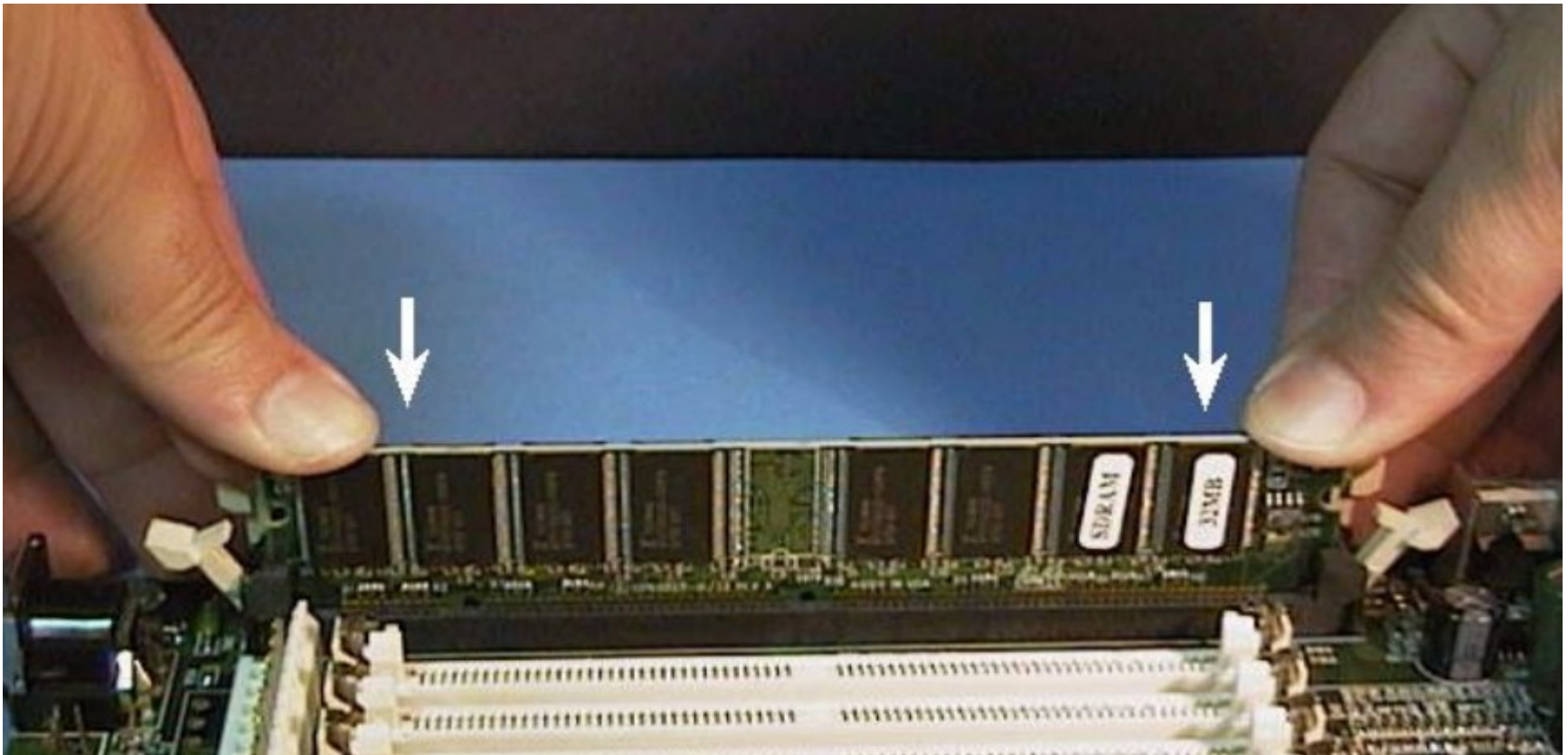
Abrir as laterais do Gabinete e inserir os Parafusos de fixação



**Fixar a placa mãe
No gabinete**



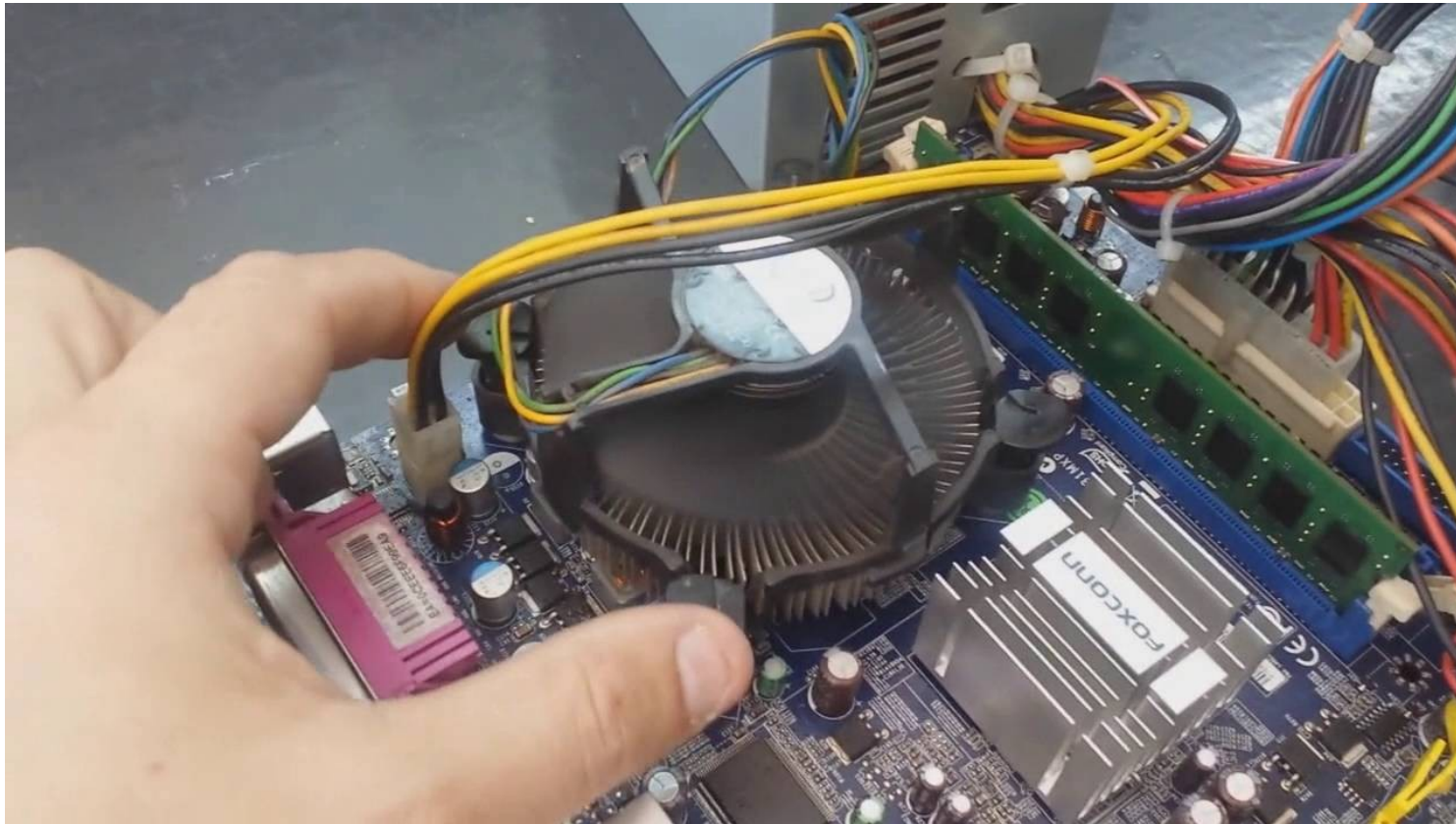
Após fixar a placa mãe Conecte as memórias



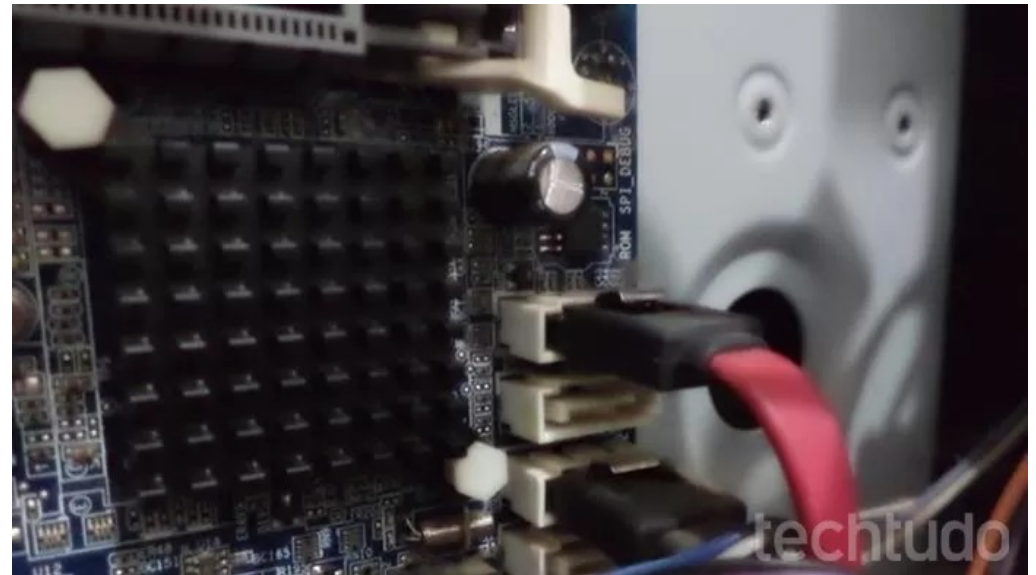
Acoplar o processador



Acoplar o cooler



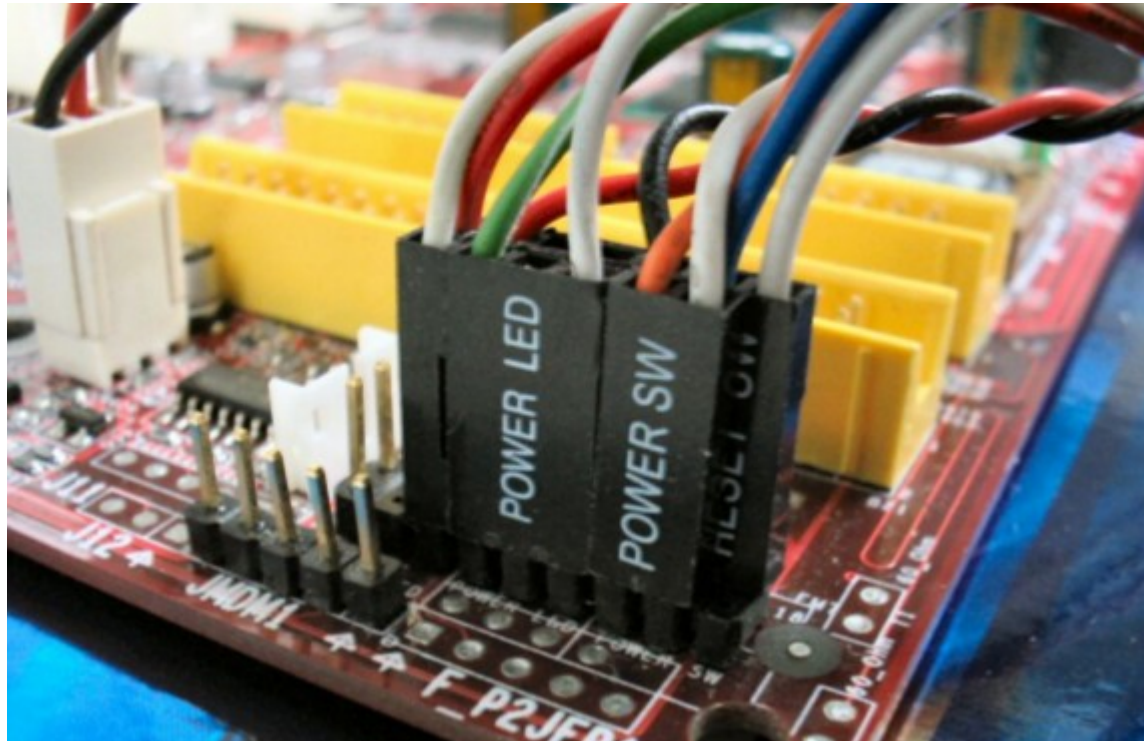
Colocar HD



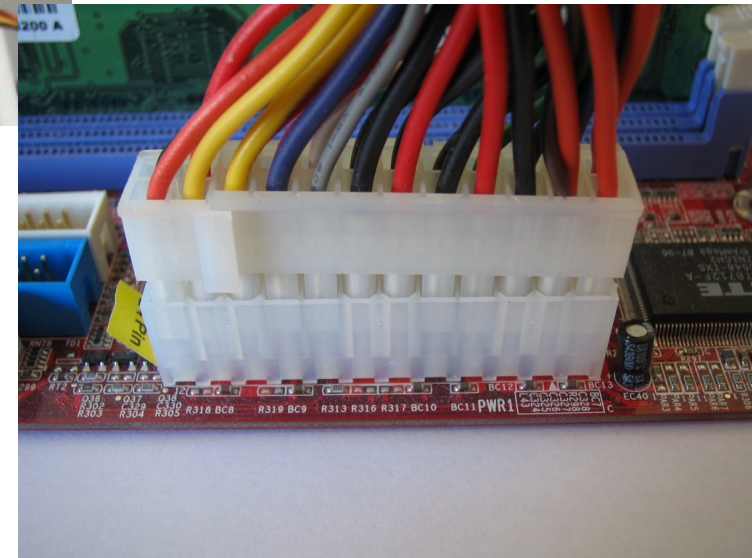
Colocar Drive de disco



Conectores do painel frontal



Acoplar a fonte de alimentação



FIM